



Products may differ from illustrations shown

This platform trolley features the new R6+ Mk II chassis and offers an innovative way to integrate an entrance making loading and unloading more ergonomic.

Thanks to the new pendulum axle, the trolley can also be used on ramps. In order to enable optimized processes in production, the fixed castors can be folded up and allow for easy transverse movement by hand. Compared to the original R6+, speeds on straights of up to 12 km/h are now possible and cornering stability is significantly increased.

Model	ART.-NO.	L x W x H outside	usable area height
Plattformwagen R6+ Mk II	469-1303	approx. 2200 x 1310 x 1140 mm	290 mm

**ROUTE TRAINING**

**ROUTE TRACTION**

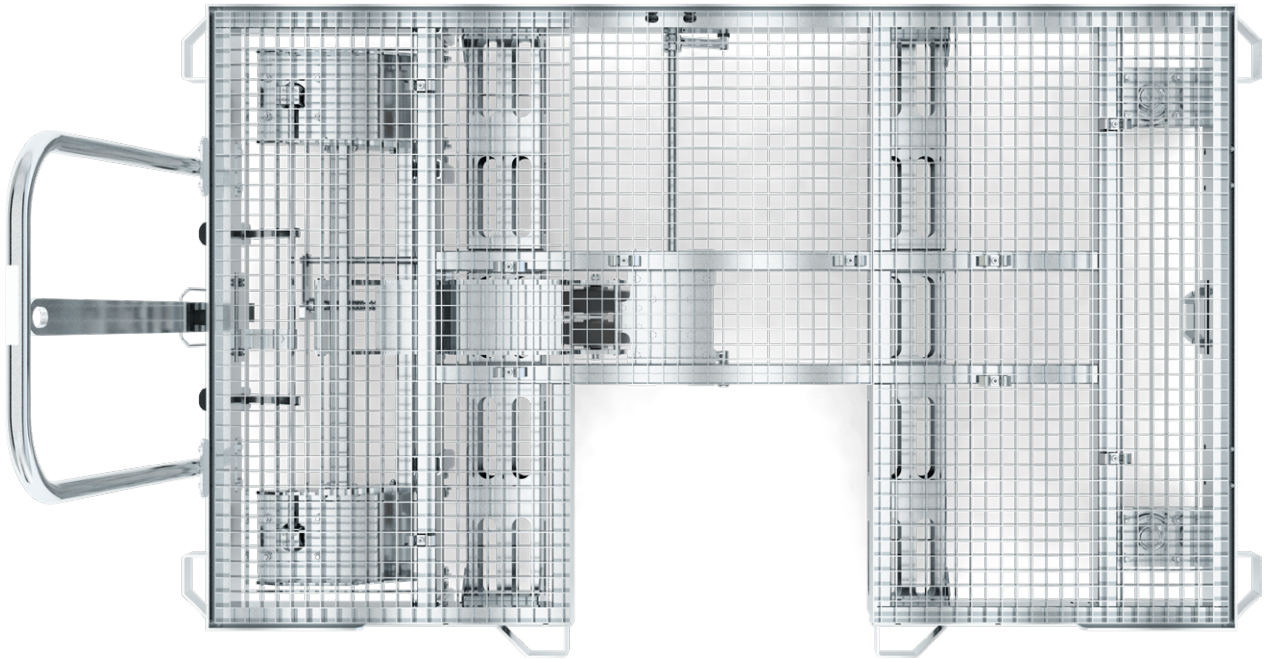
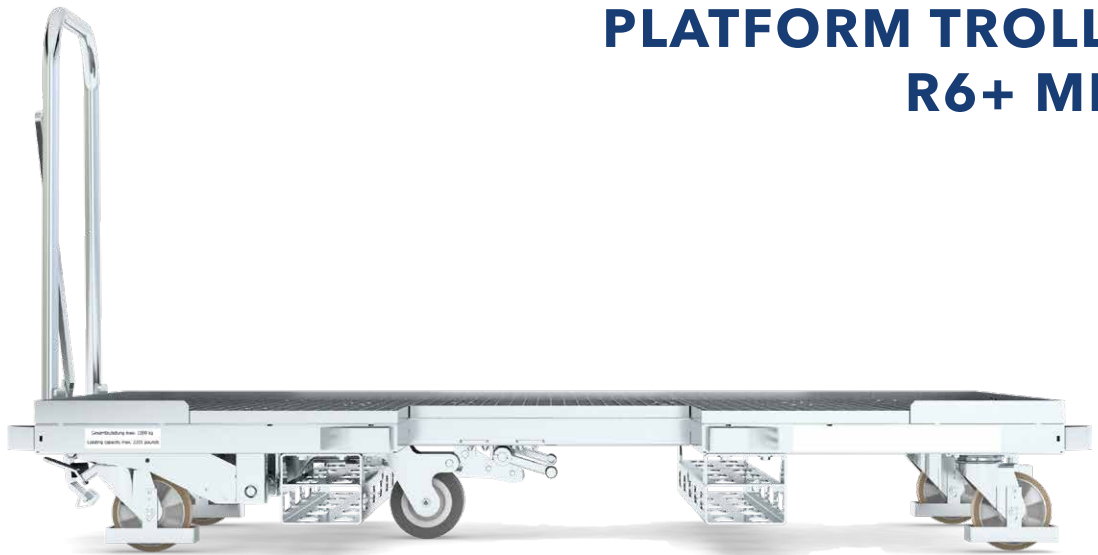
**MANOEVRABLE**

**ROBUST**

**ERGONOMIC**

**DRIVABLE UP TO  
5° SLOPE**

# PLATFORM TROLLEY R6+ MK II



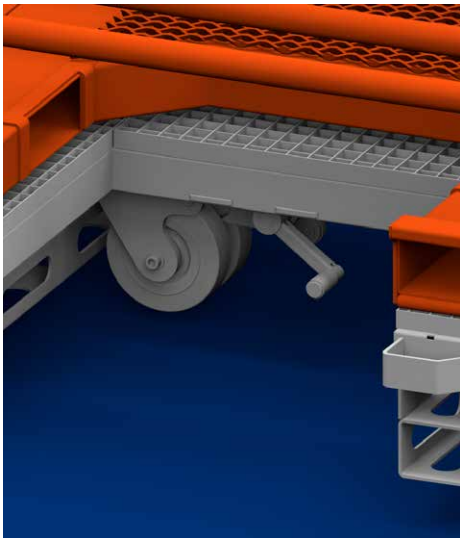
Products may differ from illustrations shown



## INCLINATIONS (UP TO 5°)

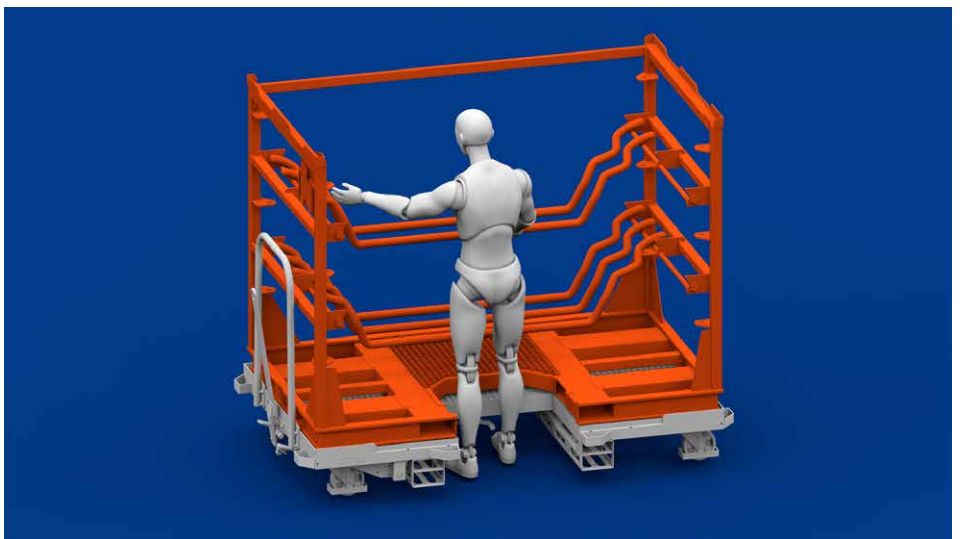


The two fixed casters in the middle of the trolley make it not only suitable for towing but also for use on inclinations up to 5 degrees. When the drawbar is lowered to couple the trolleys, the fixed casters lower automatically to guarantee constant contact with the ground. Due to its special design, the R6+ Mk II can negotiate inclinations with an angle of up to 5°.



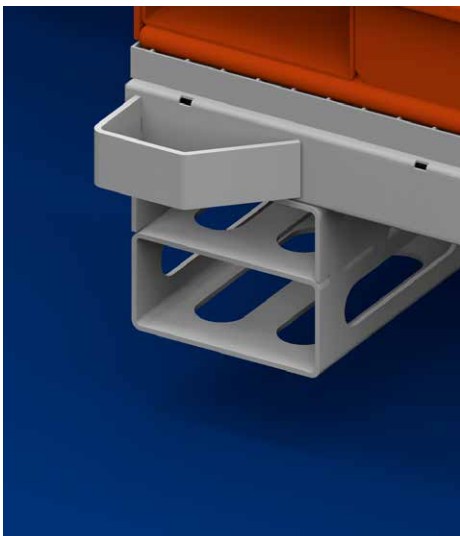
## FIXED CASTORS

When not coupled to another trolley, the pedal can be used to raise the fixed castors and is now able to move the trolley freely and transversely.

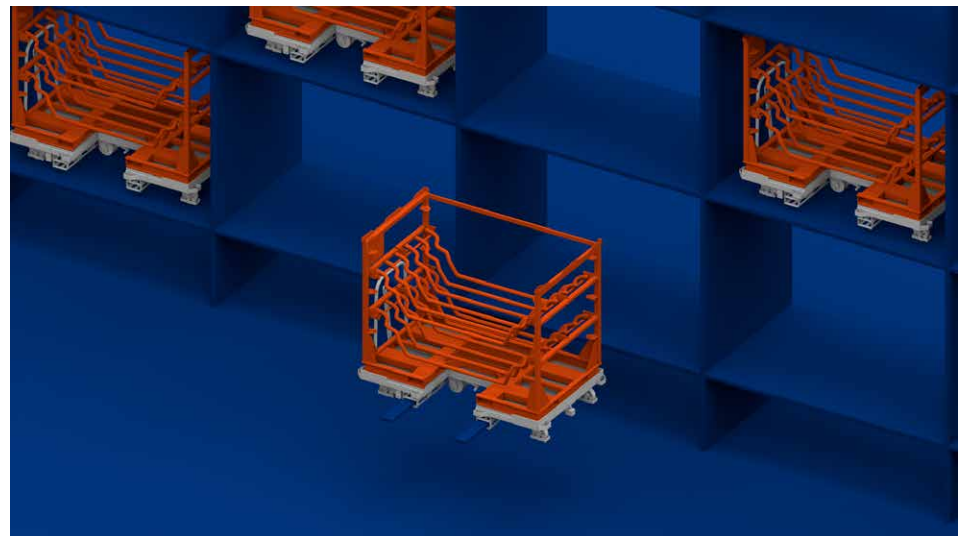


## ENTRANCE

There is a recess in the grid floor at the side. This creates an entrance which makes it possible to step closer to the load and remove components from it ergonomically and safely.



## FORKLIFT GUIDES



Due to the protected forklift guides, which can be optionally fitted to the R6+ Mk II, the trolley can be stacked on itself when empty. This is a great advantage, especially when transporting or storing the trolleys. In addition, the trolley can also be lifted in order to be loaded, e.g. into racking or onto trucks.



### **DIMENSIONS (LxWxH):**

- outside: approx. 2200 x 1310 x 1140 mm
- usable area: approx. 2025 x 1225 mm
- usable area height: 290 mm
- track width: approx. 895 mm

### **LOAD:**

- max. total trolley load:  
500 kg (max. speed: 12 km/h)
- max. total trolley load:  
1000 kg (max. speed: 6 km/h)

### **CHARACTERISTICS:**

- conventional coupling/drawbar system
- R6+ Mk II chassis
- optionally stackable

### **CASTORS:**

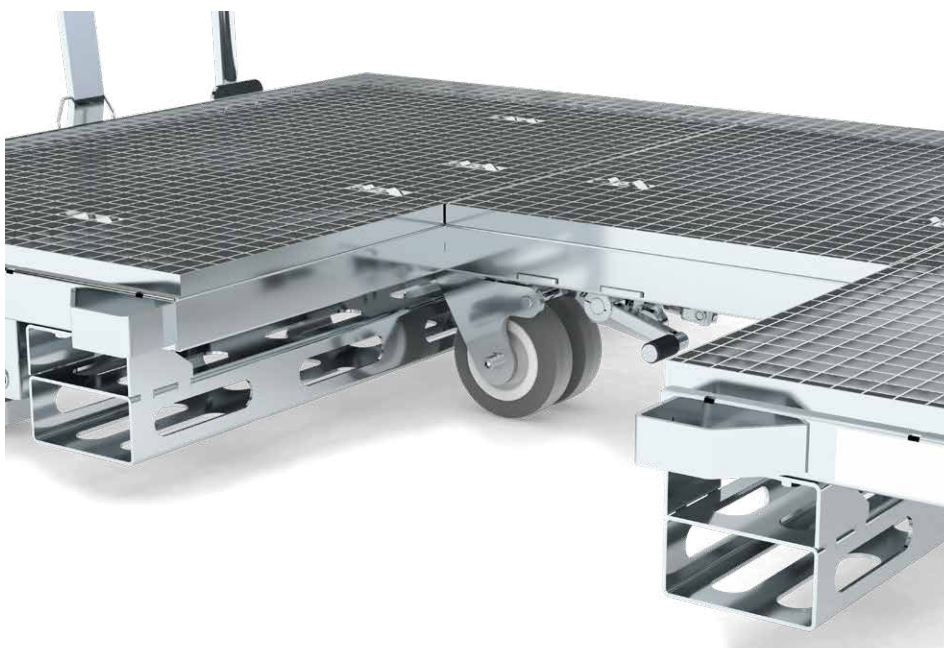
- 4 swivel castors with polyurethane tread
- 2 fixed castors with solid rubber tread
- 2 castors lockable
- Wheel diameter: 160 mm
- Tread hardness: 92° Shore A / 65° Shore A
- Foot protection on all swivel castors

### **COVERS:**

- Mesh cover 30 x 30 mm

### **ACCESSORIES:**

- with all-round edging
- with removable push handle
- ESD-capable via castors 10h7 Ohm
- transport trolley lockable via central locking lever
- fork-lift truck guides



Products may differ from illustrations shown